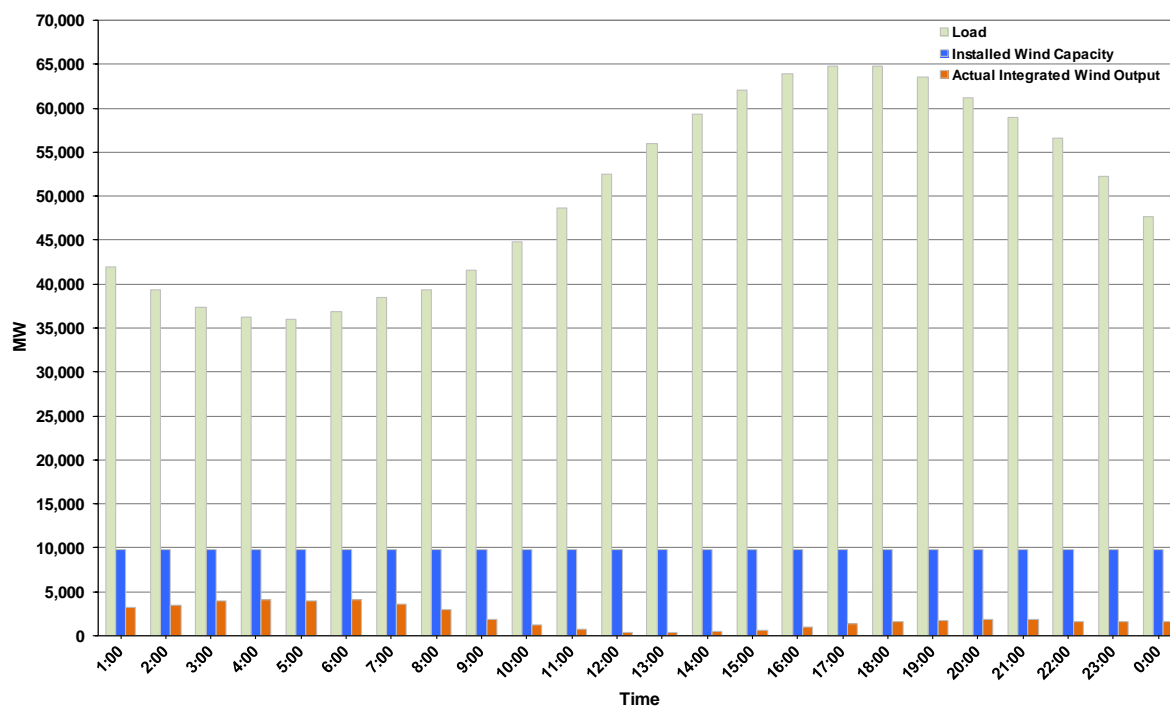




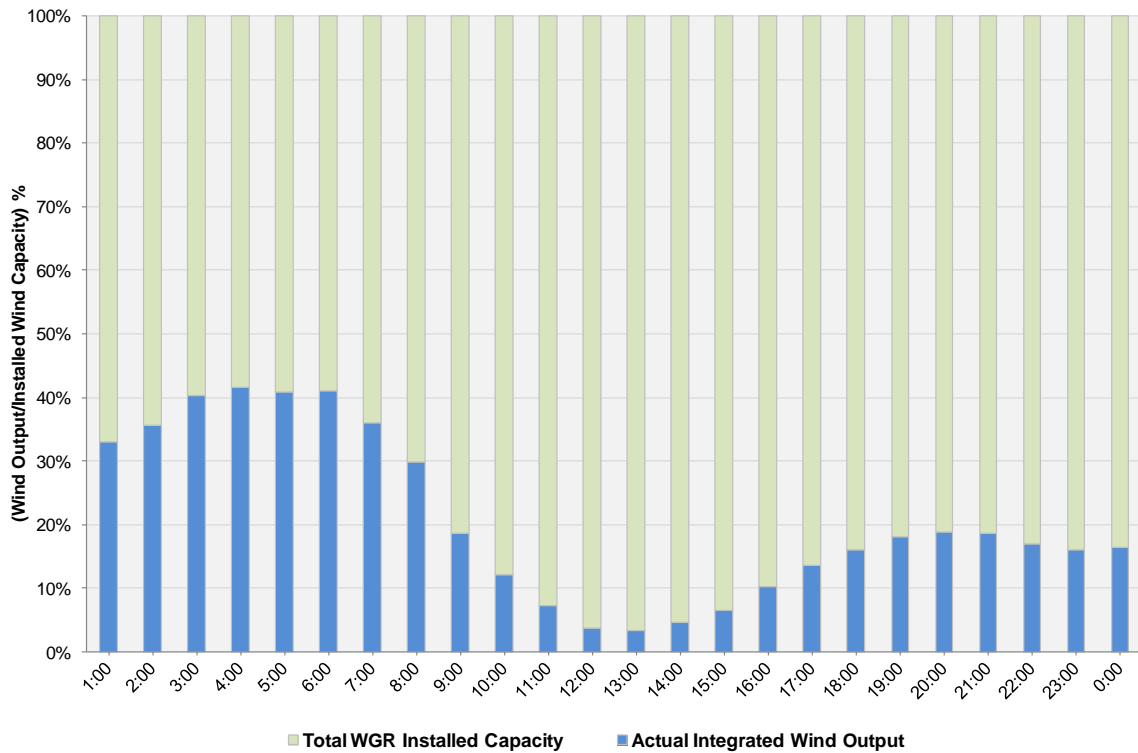
## ERCOT Grid Operations Wind Integration Report: 07/31/2013

Peak Load	<b>64,773 MW</b>
Load Peak Hour (HE)	<b>17</b>
Wind over Peak	<b>1,341 MW</b>
Wind Record 05/02/13	<b>9,674 MW</b>
Max Wind Value	<b>4,240 MW</b>
Wind Peak Time	<b>02:55</b>
Wind Integration %	<b>11.54%</b>

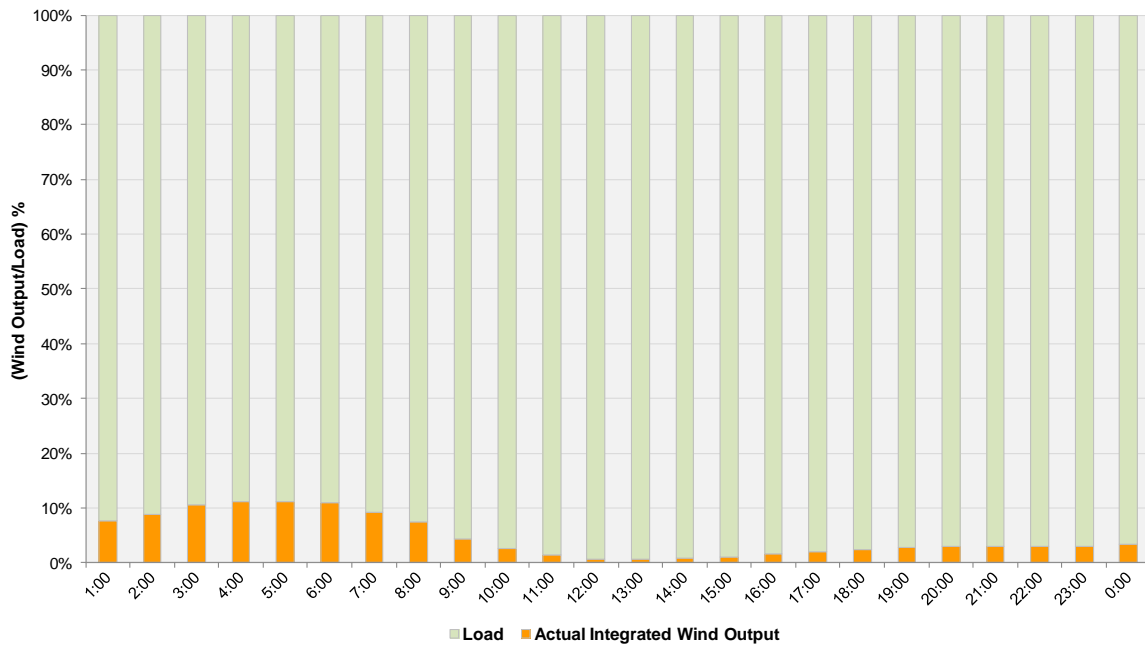
**Hourly Average Actual Load vs. Actual Wind Output  
07-31-2013**



**Actual Wind Output as a Percentage of the Total Installed Wind Capacity  
07-31-2013**



**Actual Wind Output as a Percentage of the ERCOT Load  
07-31-2013**



ERCOT Load vs. Actual Wind Output 7/24/2013 - 7/31/2013

